

This site is staffed 0730-1630 (Mon-Fri) however access should be available 24/7. There are some key policies you should be aware of to ensure a safe visit.

Preparing for your visit:

How to find us:

Travel by:

Lothian services: 12, 15 & 45 from Marine Garage a 5 minute walk.

19, 21, 26, 49 & N26 from Portobello High Street a 10 minute walk.

HI-VIS MUST BE WORN IN ALL AREAS WHERE TRAFFIC MOVEMENTS ARE LIKELY



Car: On street parking is available. Limited site parking may be available.

There is a 10mph speed limit at all times on Lothian property.

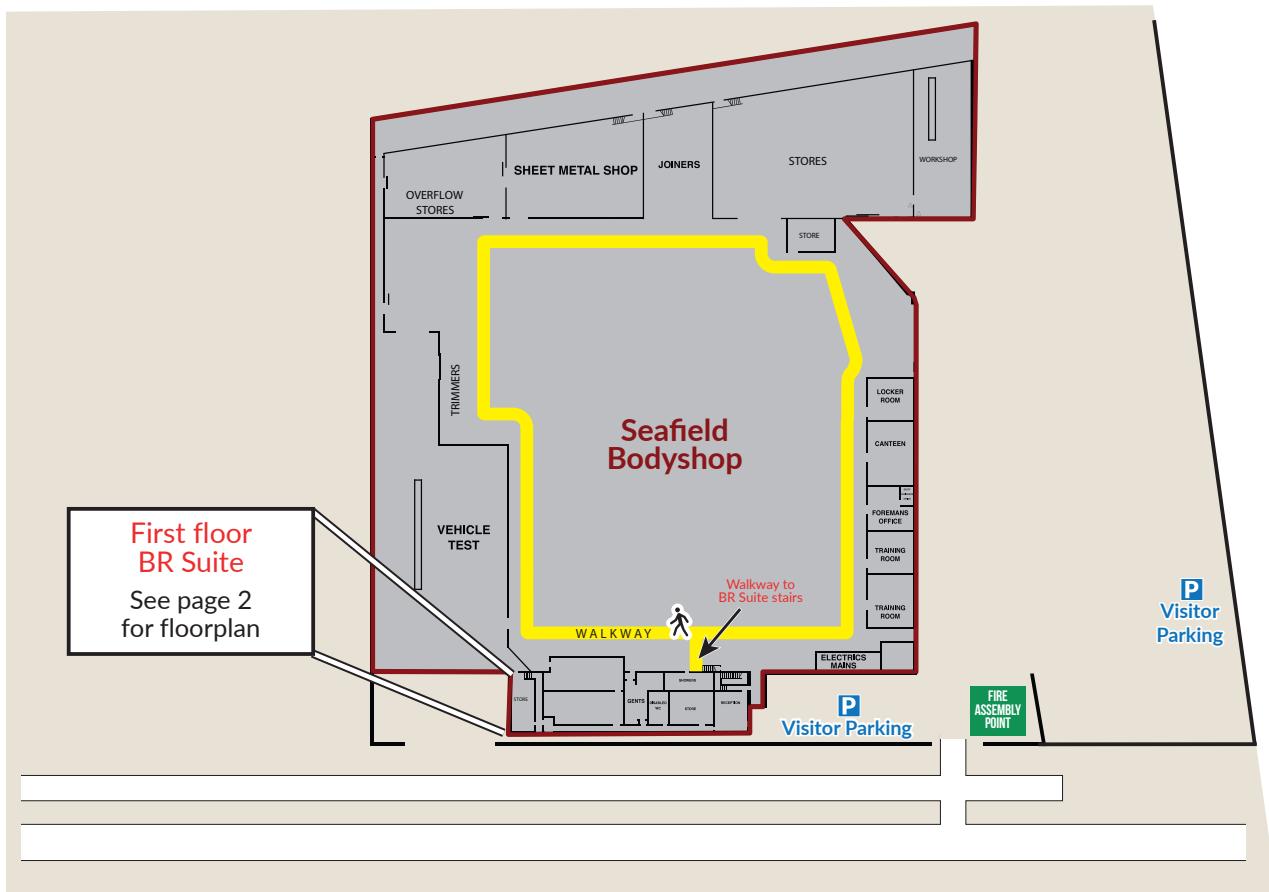
On arrival:

Please enter building via the front door, located next to the visitor parking. Proceed up the stairwell located to the right of the entrance door and continue through a doorway protected by roller shutters.

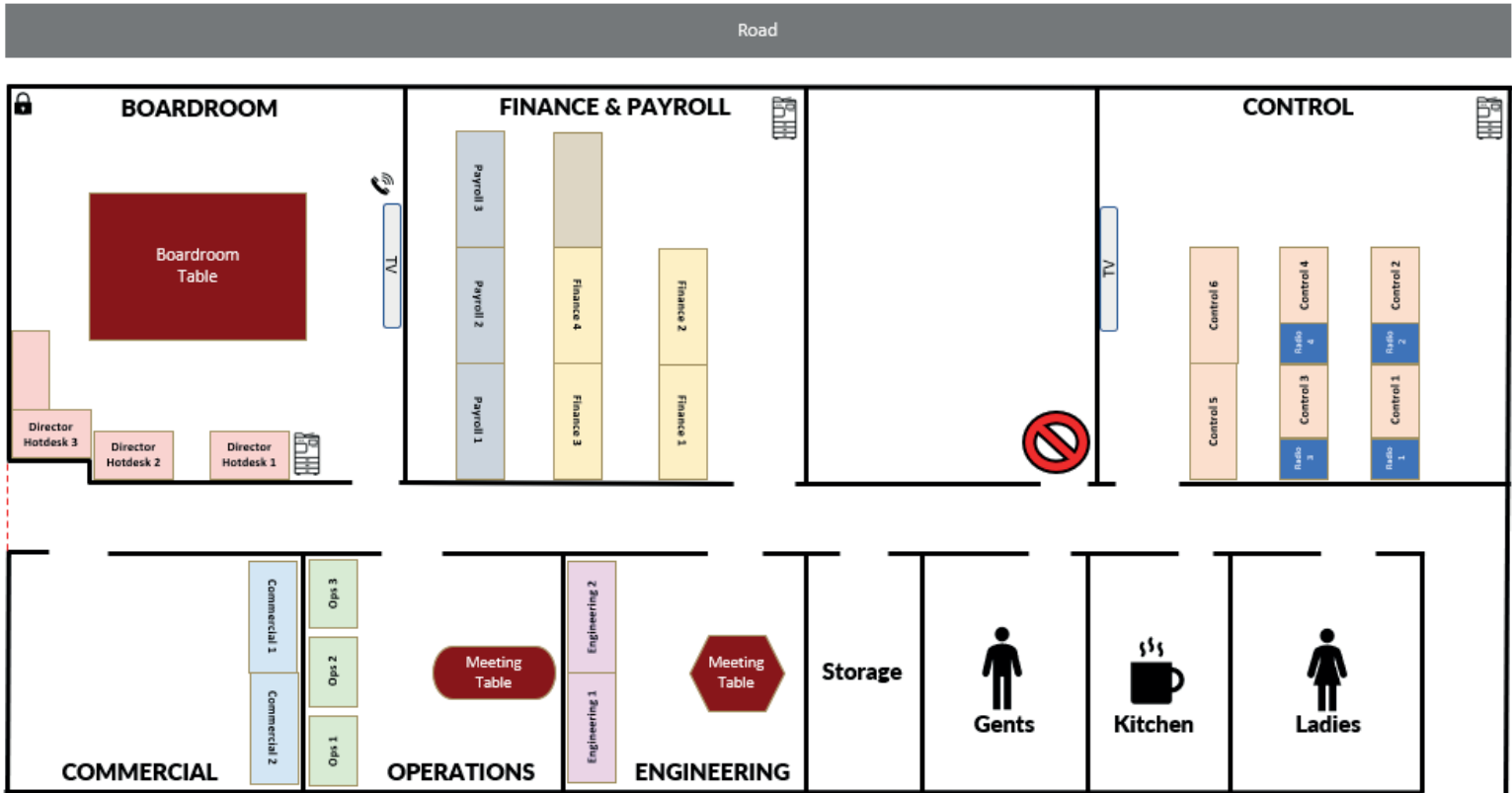
If outwith working hours, keys and the building alarm code can be obtained by contacting Control.

Colleagues operating from this site:

You should have already received a site familiarisation/induction. If this hasn't taken place, please inform the site foreman. Please be aware that risks are present in Engineering Workshops you may not be familiar with. Please remain on designated walkways at all the times. Routine fire alarm testing is 11:00 every Friday. Please familiarise yourself with fire assembly location.



Seafeld BR Floorplan



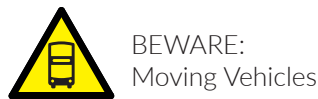
For your safety:

Please be aware of the following type of on-site safety signage and the importance to adhere to these at all times:

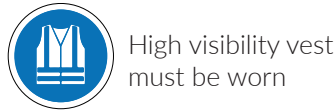
PROHIBITION



WARNING



MANDATORY



SAFE CONDITION



Smoking Policy: Smoking is only permitted in a designated smoking shelter.

WE TAKE THE SAFETY OF ALL VISITORS SERIOUSLY, FAILURE TO COMPLY WITH OUR SAFETY STANDARDS MAY RESULT IN A REQUEST TO LEAVE THE PREMISES.



At Lothian, we are very conscious of the impact of our operations on the environment. We endeavour to ensure that we generate the minimum possible amount of waste and reduce our energy and water usage. As part of our environmental policy we ask that all visitors use recycling bins provided and save energy where possible.